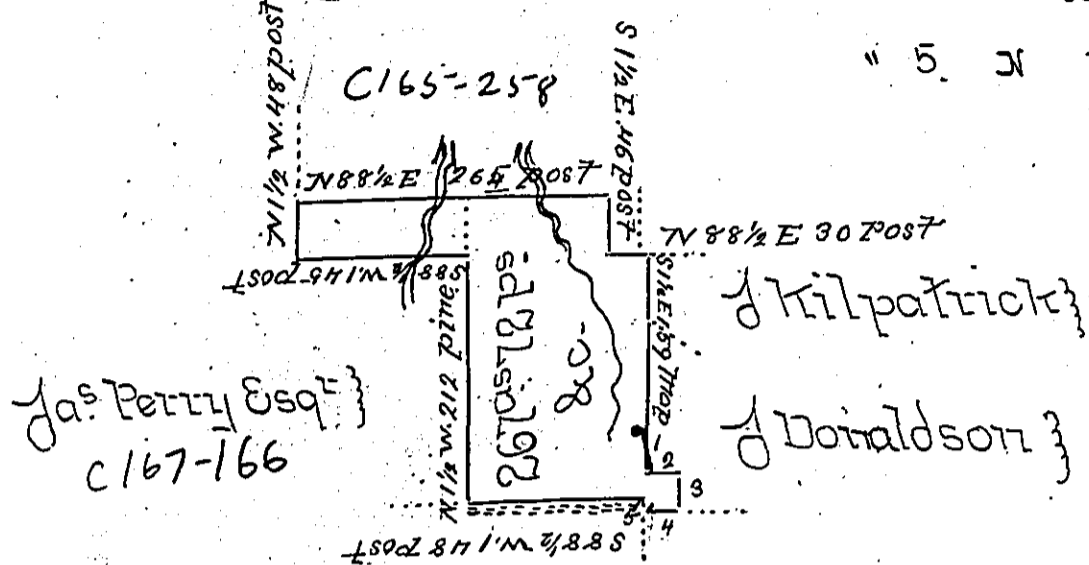


Courses and distances from
Maple to post

- N^o 1. S ½ E. 28 post
- " 2. N 88½ E. 31.2 "
- " 3. S ½ E. 31.2 "
- " 4. S 88½ W. 31.2 Maple Stump
- " 5. N ½ W. 5 post

Surveyed to P. Surrena



Thos McKee Esq^r

Draft of a tract of land situate in Twin Township Venango County, West of the Allegheny River, on the waters of Big Scrub-grass Creek, being the Eastern part of a larger tract heretofore surveyed to Thos McKee Esq^r

Surveyed 22nd May 1850 for Philip Surrena on improvement and Settlement
Chas H Heydrick U.S.

The above is a true copy of the Original entry of C.H. Heydrick Esq^r late Deputy Surveyor of Venango County Witness my hand this 18th day Nov 1851

M Riddle U.S.

Jo^s P Brawley Esq^r }
Sur Gen Pa

IN TESTIMONY that the above is a copy of the original remaining on file in the Department of Internal Affairs of Pennsylvania, made conformably to an Act of Assembly approved the 16th day of February, 1833, I have hereunto set my Hand and caused the Seal of said Department to be affixed at Harrisburg, this Third day of January 1899.

James W. Jatta
Secretary of Internal Affairs.

